



**Government Finance
Research Center**

GFRC Brief

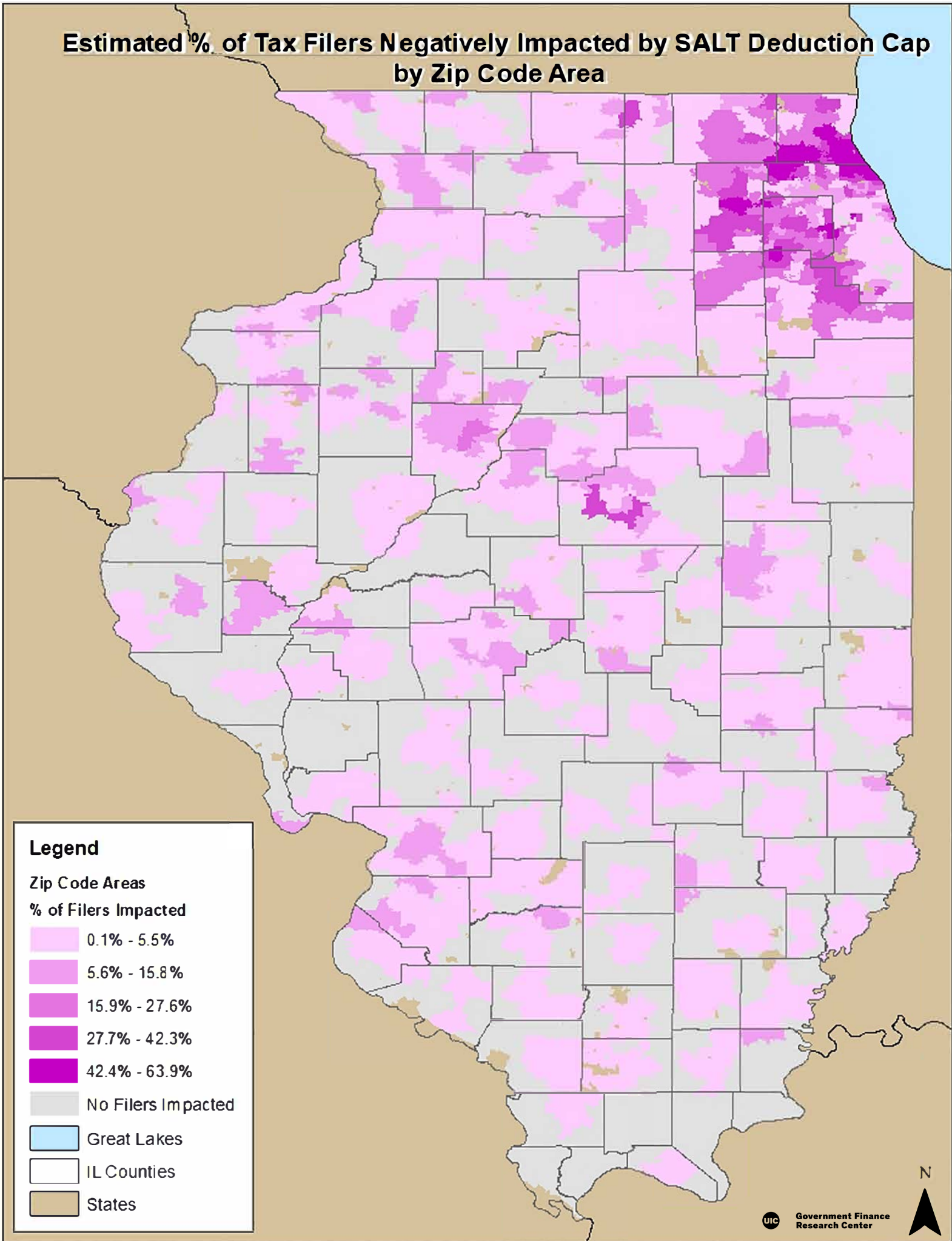
**Estimated Impact of the Cap on SALT Deductions at the Zip Code
Level in Illinois**

Yonghong Wu, PhD
Associate Professor of Public Administration
Government Finance Research Center
University of Illinois at Chicago
yonghong@uic.edu and GFRC@uic.edu

22 February 2019

Mapping the Impact of the New SALT Deduction Cap in Illinois

Estimated % of Tax Filers Negatively Impacted by SALT Deduction Cap by Zip Code Area



Estimated Average % Reduction in Income for Tax Filers with AGI \$100,000 - \$200,000 due to the SALT Deduction Cap, by Zip Code Area

Legend

Zip Code Areas

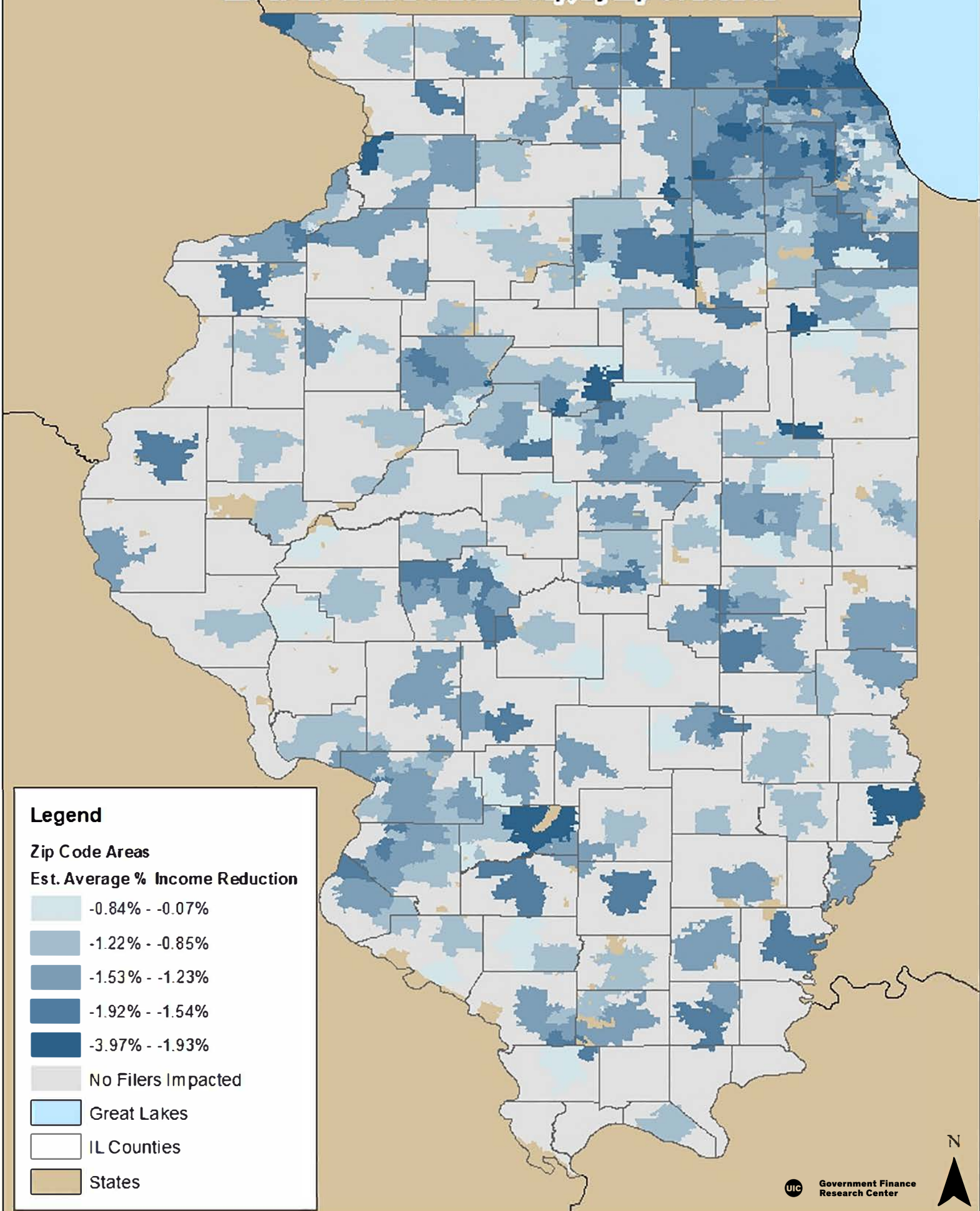
Est. Average % Income Reduction

- 0.17% - <0%
- 0.4% - -0.18%
- 0.7% - -0.41%
- 1.22% - -0.71%
- 1.88% - -1.23%

- No Filers Impacted
- IL Counties
- States
- Great Lakes



Estimated Average % Reduction in Income for Tax Filers with AGI At or Above \$200,000 due to the SALT Deduction Cap, by Zip Code Area



Legend

Zip Code Areas

Est. Average % Income Reduction

-0.84% - -0.07%

-1.22% - -0.85%

-1.53% - -1.23%

-1.92% - -1.54%

-3.97% - -1.93%

No Filers Impacted

Great Lakes

IL Counties

States

